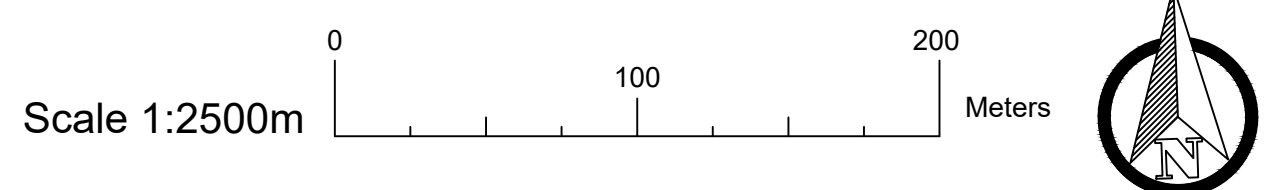
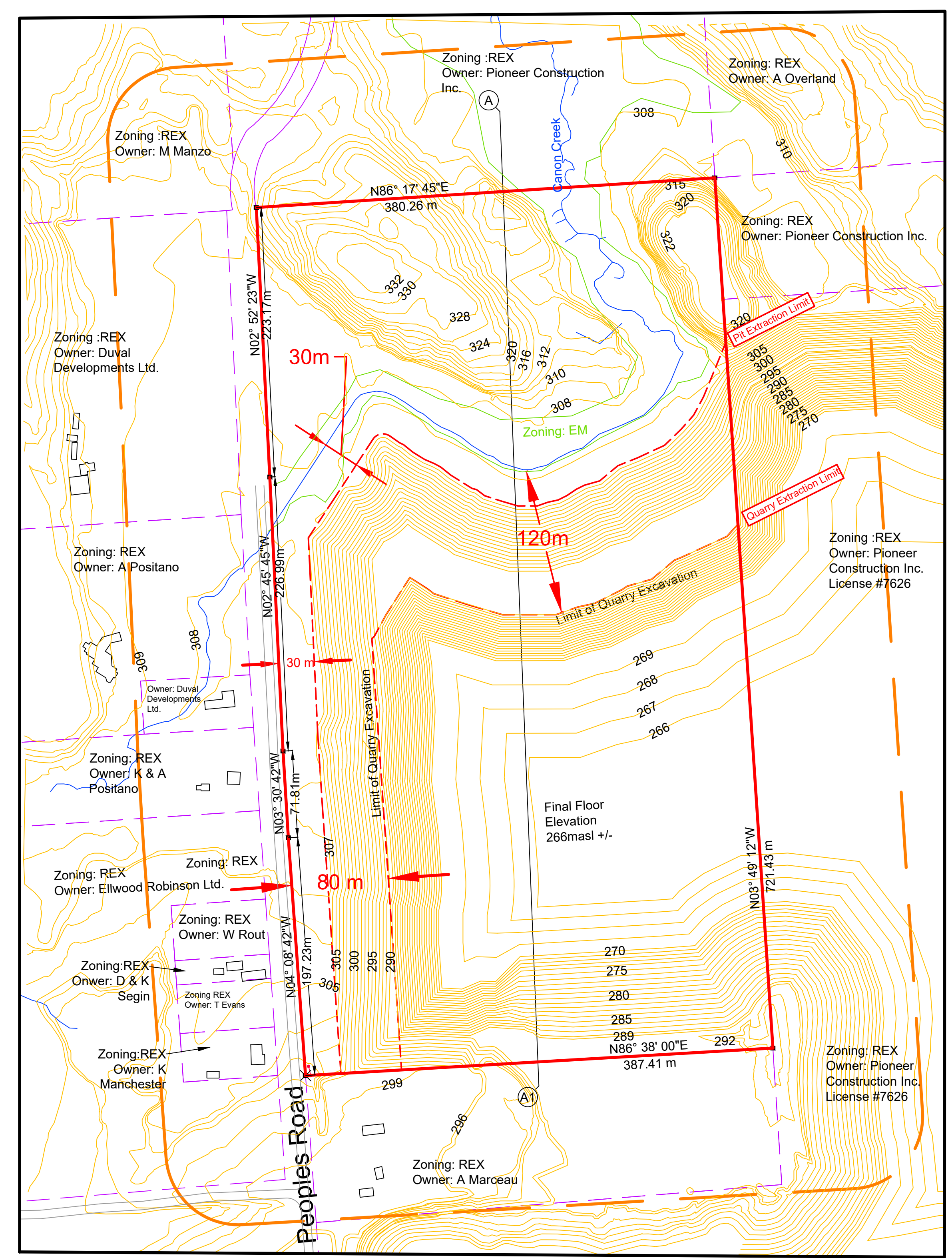


LEGEND

- Boundary
- 120m Area of Influence
- River/Stream
- ▶ Direction of Drainage
- - - Excavation Setback
- - - Parcel Lines
- Contour with Elevation (mASL)
- - - Treeline
- ▭ Lake or Pond
- ▭ Existing Buildings
- ⊙ Profile Line

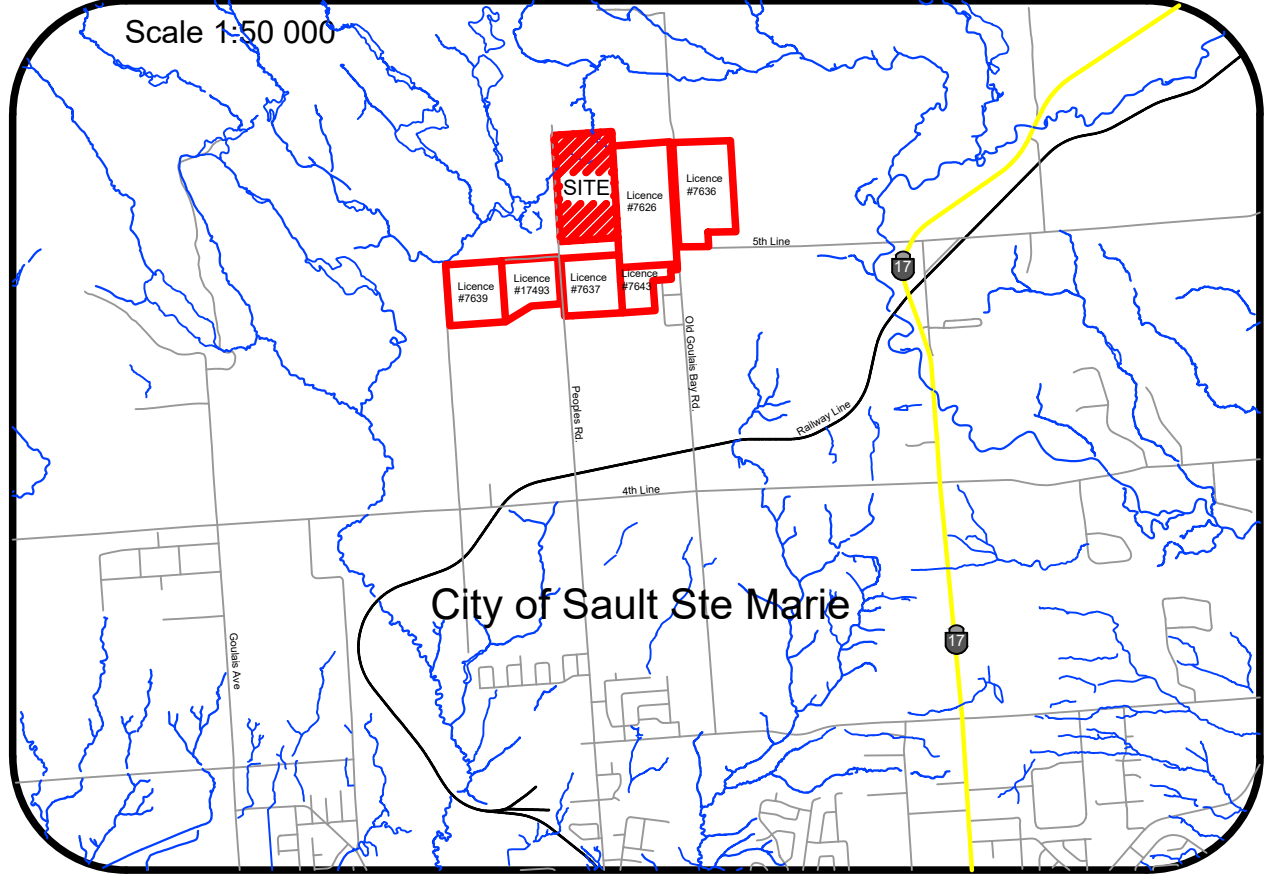
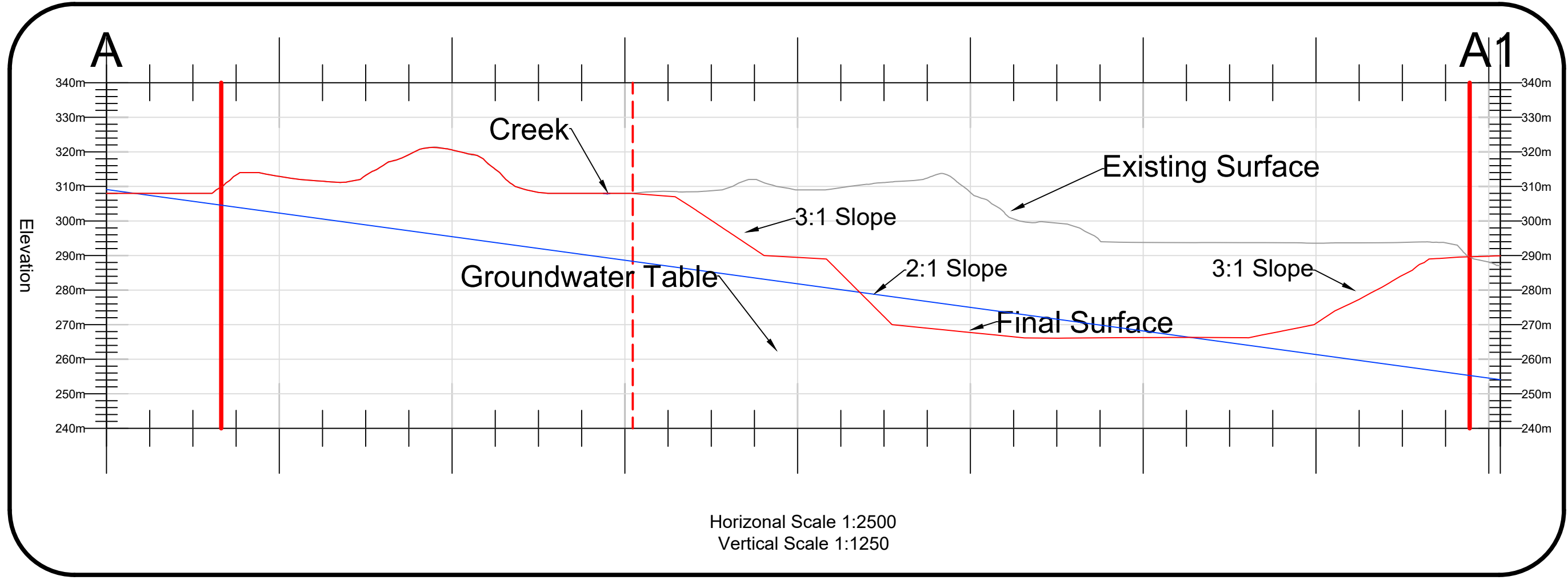


Progressive Rehabilitation

- 1.3.1 The Sequence and direction of progressive rehabilitation will follow aggregate extraction leaving 3:1 slopes in unconsolidated material, and 2:1 slopes in consolidated material as extraction continues. The pit floor will be rehabilitated after extraction is complete.
- 1.3.2 As the limit of extraction is reached, the operator will either extract to the limit of extraction and backfill to produce a 3:1 or 2:1 slope with available overburden, or extract less material and use in situ material to produce a 3:1 or 2:1 slope. Due to lack of overburden, import fill may be used on the pit floor and side slopes to permit the establishment of vegetation.
- 1.3.3 Vegetation will be established through hydro-seeding, select tree planting and natural regeneration.
- 1.3.4 The faces will be sloped and graded to achieve a 3:1 or 2:1 slope and the floor will be leveled.
- 1.3.5 Progressive rehabilitation will follow the operational sequence.
- 1.3.6 Clean inert fill (e.g. Topsoil and/or overburden) may be imported to facilitate pit rehabilitation. Only sufficient material to create a 3:1 or 2:1(horizontal: vertical) grade may be imported. Fill will be imported according to Ontario Regulation 406.

Final Rehabilitation

- 1.4.1 Clean inert fill (e.g. Topsoil and/or overburden) may be imported to facilitate pit rehabilitation. Only sufficient material to create a 3:1 or 2:1(horizontal: vertical) grade may be imported. Fill will be imported according to Ontario Regulation 406.
- 1.4.2 Berms to be removed and the faces will be sloped and graded to achieve a 3:1 or 2:1 slope, and the floor will be leveled.
- 1.4.3 All slopes and graded pit floor areas will be allowed to re-vegetate naturally. Hydro-seeding may be used and native/local plant material (shrubs and trees) may be planted or transplanted in areas within the pit to facilitate naturalized re-vegetation.
- 1.4.4 No buildings and/or structures will remain on the site.
- 1.4.5 The established groundwater table is variable. According to the Level 2 Hydrogeological Study Report completed by WSP November 2020, the groundwater level ranges from approximately 307-309masl at SW2 to 254-258masl at Well #1.
- 1.4.6 No internal haul roads will remain on the site.
- 1.4.7 No surface water drainage or drainage facilities are proposed for the site.
- 1.4.8 Final floor elevation will be 266m+/- a.s.l.



Ministry of Natural Resources Approval

- 1.4.1 Clean inert fill (e.g. Topsoil and/or overburden) may be imported to facilitate pit rehabilitation. Only sufficient material to create a 3:1 or 2:1(horizontal: vertical) grade may be imported. Fill will be imported according to Ontario Regulation 406.
- 1.4.2 Berms to be removed and the faces will be sloped and graded to achieve a 3:1 or 2:1 slope, and the floor will be leveled.
- 1.4.3 All slopes and graded pit floor areas will be allowed to re-vegetate naturally. Hydro-seeding may be used and native/local plant material (shrubs and trees) may be planted or transplanted in areas within the pit to facilitate naturalized re-vegetation.
- 1.4.4 No buildings and/or structures will remain on the site.
- 1.4.5 The established groundwater table is variable. According to the Level 2 Hydrogeological Study Report completed by WSP November 2020, the groundwater level ranges from approximately 307-309masl at SW2 to 254-258masl at Well #1.
- 1.4.6 No internal haul roads will remain on the site.
- 1.4.7 No surface water drainage or drainage facilities are proposed for the site.
- 1.4.8 Final floor elevation will be 266m+/- a.s.l.

This site plan is prepared under the Aggregate Resource Act for a Class 'A' Licence, Category 1 & 2 Pit & Quarry below water.

This site plan is prepared under the supervision of J.W. (Jim) Clark who is a qualified person approved in writing under Section 8(4) of the Aggregate Resources Act to prepare and certify site plans.

Pioneer Construction Inc.

Signature _____
Date _____

NO.	DATE	AMENDMENT DESCRIPTION	APPROVED

Drawing by: **Aaron Craig**
 Revisions by: **Jessica Sheppard**
 Revisions by: _____
 Revisions by: _____
 Checked by: **Jim Clark**

City Pit & Quarry Final Features

1708 - 1756 Peoples Road
 Sec. 12 Pt. SE₄
 RP1 R9833Parts 1 to 6 & RP 19831 Part 1
 City of Sault Ste. Marie, ON

Licensee: **Pioneer Construction Inc.** Sheet
 1 Caesar Road. 4 of 4
 Sudbury, ON P3E 5P3